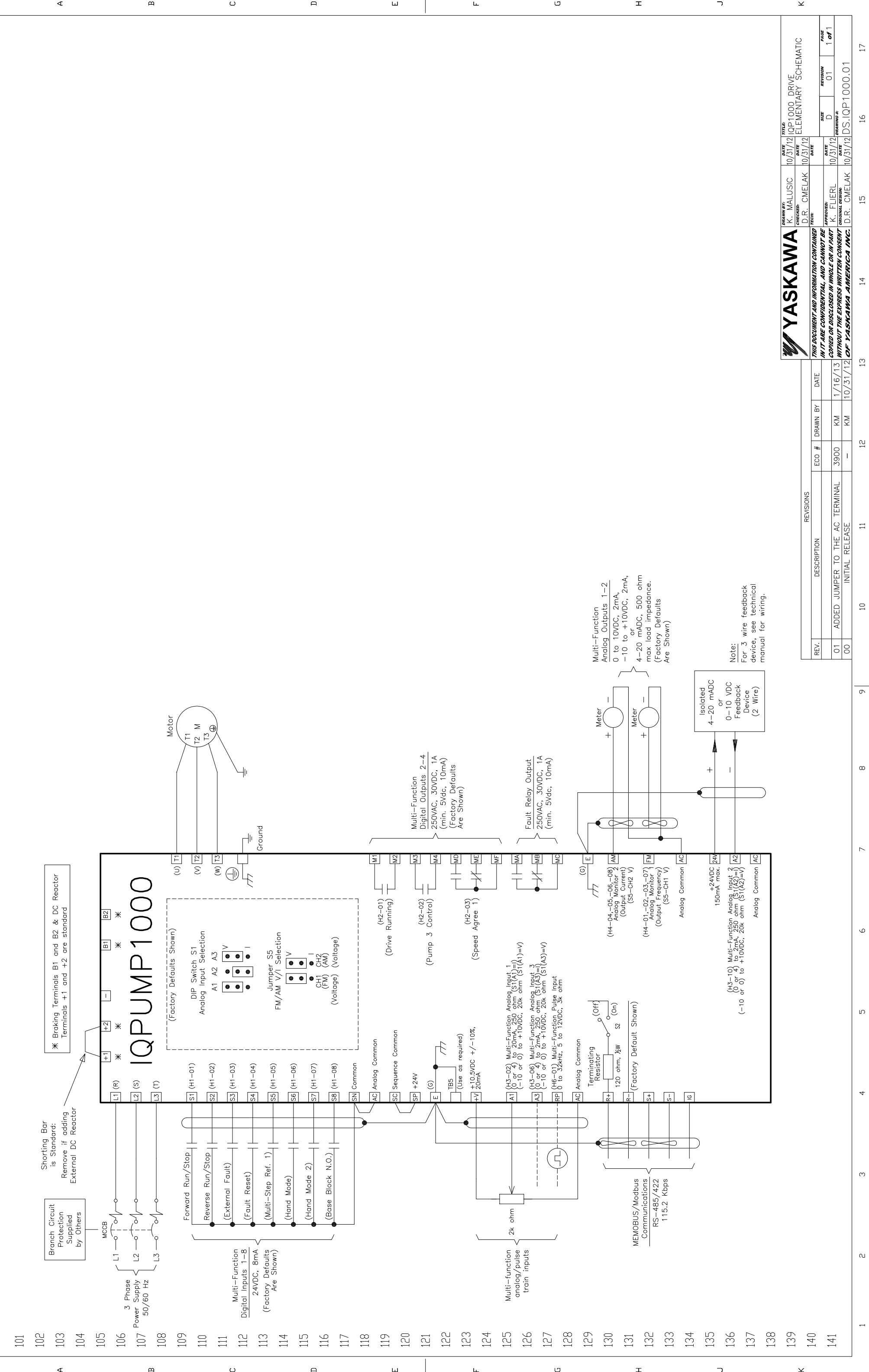


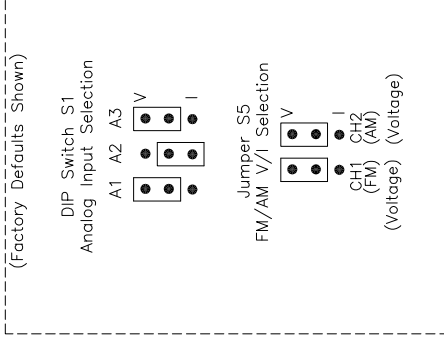
17 16 15 14 13 12 11 10 9 8 7 6 5 4 3 2 1



* Braking Terminals B1 and B2 & DC Reactor Terminals +1 and +2 are standard

Branch Circuit Protection is Standard: Remove if adding External DC Reactor

IQPUMP1000



Multi-Function Digital Outputs 2-4
250VAC, 30VDC, 1A
(min. 5Vdc, 10mA)
(Factory Defaults Are Shown)

Multi-Function Analog Input 1
(0 or 4) to 20mA, 250 ohm (S1(A1)=V)
(-10 or 0) to +10VDC, 20k ohm (S1(A1)=V)

Multi-Function Analog Input 3
(0 or 4) to 2mA, 250 ohm (S1(A3)=I)
(-10 or 0) to +10VDC, 20k ohm (S1(A3)=V)

Multi-Function Pulse Input
(H6-01) Multi-Function Pulse Input
0 to 32kHz, 5 to 12VDC, 3k ohm

Multi-Function Analog Input 2
(0 or 4) to 2mA, 250 ohm (S1(A2)=I)
(-10 or 0) to +10VDC, 20k ohm (S1(A2)=V)

Multi-Function Analog Outputs 1-2
0 to 10VDC, 2mA,
-10 to +10VDC, 2mA,
or
4-20 mA DC, 500 ohm
max load impedance.
(Factory Defaults Are Shown)

Note:
For 3 wire feedback device, see technical manual for wiring.

YASKAWA

THIS DOCUMENT AND INFORMATION CONTAINED IN IT ARE CONFIDENTIAL AND CANNOT BE COPIED OR DISCLOSED IN WHOLE OR IN PART WITHOUT THE EXPRESS WRITTEN CONSENT OF YASKAWA AMERICA, INC.

REV.	DESCRIPTION	ECO #	DRAWN BY	DATE
01	ADDED JUMPER TO THE AC TERMINAL	3900	KM	1/16/13
00	INITIAL RELEASE	-	KM	10/31/12

DATE	TITLE	DATE	DATE	DATE	DATE	DATE	DATE	DATE
10/31/12	IQP1000 DRIVE ELEMENTARY SCHEMATIC	10/31/12	10/31/12	10/31/12	10/31/12	10/31/12	10/31/12	10/31/12
SIZE	REVISION	REVISION	REVISION	REVISION	REVISION	REVISION	REVISION	REVISION
D	01	01	01	01	01	01	01	01
DRAWING #	PAGE	PAGE	PAGE	PAGE	PAGE	PAGE	PAGE	PAGE
DS-IQP1000.01	1 of 1	1 of 1	1 of 1	1 of 1	1 of 1	1 of 1	1 of 1	1 of 1

17 16 15 14 13 12 11 10 9 8 7 6 5 4 3 2 1